

## Adjustment chart

### ➤ Printable size & printed paper quantity specifications

Class	Details	# of patches	# of sheets
Large size	Standard size = 13*19,12*18,SRA3,11*17,A3,8K,B4,8.5*14, ISOB4,F4,SRA4R,A4R,8.5*11R Custom size = Length to FD is 271.0 mm and over	32	3
Middle size	Standard size = 16KR,EXEC_R,B5R,ISO B5R,SRA4,8.5*11,A4, Custom size = Length to FD is between 210.0mm to 270.9mm	32	4
Small size	Standard size = 16KR,EXEC_R,B5R,ISO B5R,SRA4,8.5*11,A4, Custom size = Length to FD is between 176.0mm to 209.9mm	32	6
Not supported	Standard size = A5R,5.5*8.5R,B6R,A6R, Japanese postcard, 5.5*8.5 Custom size = Length to FD is 175.9mm or less or length to main-scan direction is 168 mm or less	-	-

Due to the color density sensor capability:

- Patch size and quantity is fixed.
- Depending on paper size (FD direction), number of sheets output changes.
- Part of paper size is not supported.

### Ex. Adjustment chart (A4 size)



A4-1



A4-2



A4-3

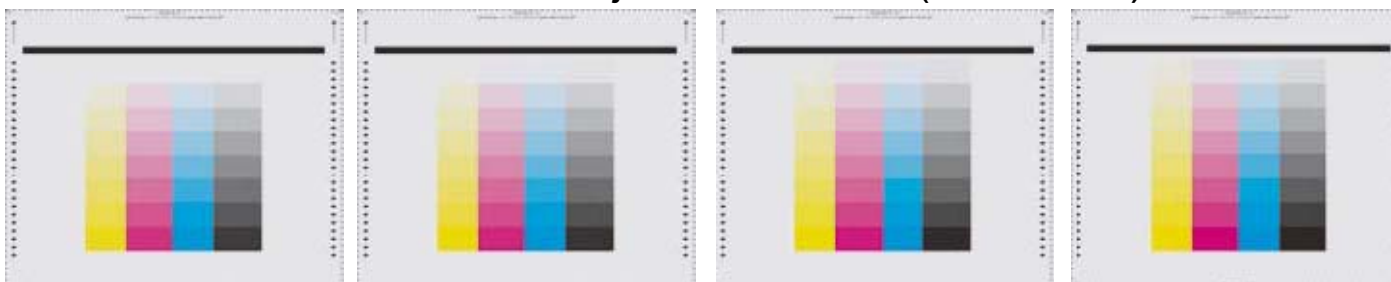


A4-4

## Adjustment chart

### ➤ Specifications of patch

#### Middle size adjustment chart( A4 Chart)



A4-1

A4-2

A4-3

A4-4

1	2	3	4
YMCK	YMCK	YMCK	YMCK
0	8	16	24
32	41	49	57
65	74	82	90
98	106	115	123
131	139	148	156
164	172	180	189
197	205	213	222
230	238	246	255

Table: Patch gradation value for middle size

## Adjustment chart

### ➤ Specifications of patch

Patch gradation value for large size (A3 chart)

1	2	3
YMCK	YMCK	YMCK
0	8	16
24	32	40
48	56	64
72	80	91
99	107	115
123	131	139
147	155	163
171	183	191
199	207	215
223	231	239
247	255	255

Patch gradation value for small size (A5 chart)

1	2	3	4	5	6
YMCK	YMCK	YMCK	YMCK	YMCK	YMCK
0	8	16	24	32	40
49	57	65	73	81	89
98	106	114	122	130	138
147	155	163	171	179	187
197	205	213	221	229	237
247	255	255	255	255	255

- To minimize the influence of abnormal result, the density value is distributed evenly (not sequential).
- Depending on the chart size, page assignment of each gradation value is different.